

NATURALLY FEELING GOOD...



CUSTOMISED COMFORT IN EVERY SEASON

Large glass panels are frequently used in contemporary architecture. Modern high-efficiency glazing ensures good insulation, and plenty of daylight ensures energy consumption is optimised and provides an increased feeling of comfort in the home. Pleasant, bright living spaces eliminate the need for artificial, energy-intensive light. During the winter months, a low sun also ensures pleasant warmth in the home, reducing the need to use the heating system.

However, it is well known that the sun can also adversely effect the indoor climate. Excessive sunlight can cause overheating, annoying reflections on screens and discolouration of the furniture and interior.

Efficient outdoor sun protection allows the occupants to control sunlight at any time of the day, for example, sun protection blades for the window, sun screens above the window, sliding panels or windproof screens. These systems stop the sun rays from heating up the air indoors, without blocking the view to the outside.



Fixscreen®

5

INTRO

8

SUN PROTECTION
SCREENS

38

ARCHITECTURAL
SUN PROTECTION

53

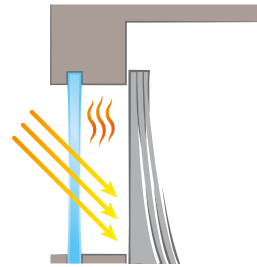
ABOUT
RENSON®



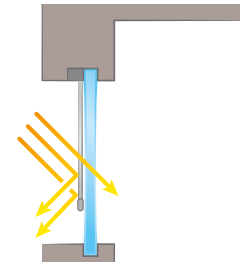
Loggiawood®

THREE WAYS TO SCREEN OUT THE SUN

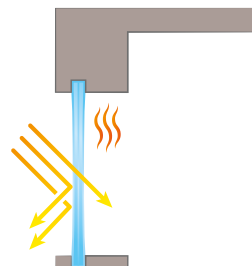
Indoor sun protection in the form of curtains, sun screens or fabric screens are an excellent and relatively inexpensive way of blocking sunlight. However, it's not an optimal solution because the heat can still get in.



Outdoor sun protection is the **most efficient way** of sun protection. It prevents sunlight from directly hitting the glass. The amount of incoming natural light and heat can be controlled depending on the situation. Thanks to this dynamic solution, you benefit from solar heat gains in the winter and protect yourself from overheating in the summer.



Solar control glass also provides protection from excess solar heat. The disadvantage is that the sun is also limited during the winter period, so less heat gets in. A related disadvantage is that it also colours the light because solar control glass is not fully transparent.



WHICH OUTDOOR SUN PROTECTION TO CHOOSE?

What type of outdoor sun protection you choose depends mainly on preference and design from the building. Do you want sun protection to be barely visible? Or do you see shading like an extra architectural eyecatcher of your home?

Sun protection screens (page 8)

In the case that you do not want visible sun protection, then screens are recommended. Both the box and side channels can now be incorporated into the façade in a very subtle way so that it is hardly noticeable - even on curtain walls.

Architectural sun protection (page 38)

Awnings in aluminum slats above the windows give - just like slats and sliding panels in front of the windows - just the possibility to add an extra cachet to a building or emphasize certain lines, shapes and in the eye-catching elements. With customized project solutions, Renson is 'the sky the limit'. You have an idea? We work it out.

SUN PROTECTION SCREENS



ARCHITECTURAL SUN PROTECTION



WHY CHOOSE SCREENS?

Design

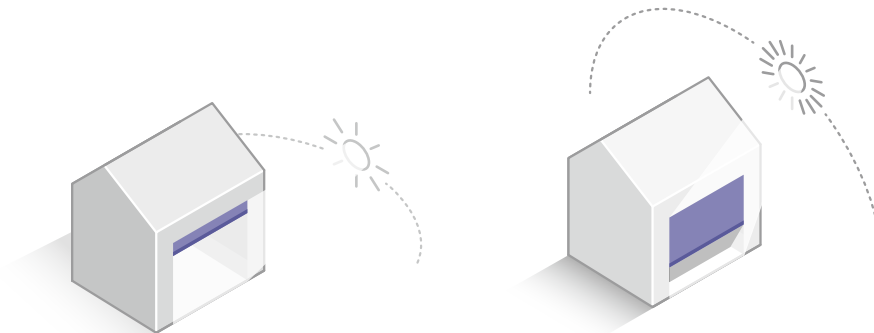
Sun protection screens blend in perfectly with the current trend of minimalism, trendy living and remarkable architecture. But also fit in smoothly with the traditional architectural styles. Invisibly integrated or subtly incorporated, executed in unique colours or with elegantly designed boxes, sun protection always gives a contemporary look to the home.

Comfort

Screens do not only ensure a comfortable indoor climate, it also prevents irritative reflections or glare, while retaining the view to the outside. For extra comfort, the sun screen may be fully automated. This way, the best possible temperature can always be realised.

Durability

Dynamic sun protection ensures that the indoor temperature remains under control and therefore comfortable during the summer. In winter, you can use the solar gains to heat up your home for free. Thanks to dynamic sun protection, you save on heating costs and your home is heated for free in a pleasant and natural way, while you save on cooling costs during the summer.



Winter

When the sun is low in the sky, it is important to maximise solar heat gains (warmth and light) to increase comfort and reduce energy consumption.

Summer

When the sun is high in the sky, it is important to restrict solar heat gains using efficient outdoor sun protection.



VERTICAL SUN SCREENS



(in mm)

TYPE OF ASSEMBLY (BOX MEASUREMENTS HxD)

Surface-mounted	100 x 100	150 x 110	150 x 155
Recessed	110 x 143		

DESIGN

Surface screen (WxH)	4000 x 2700 3500 x 3000 (10,8 m ²)	4500 x 2800 3000 x 3500 (12,6 m ²)	6000 x 3400 3200 x 6000 (22 m ²)
Surface screen (WxH) black-out fabric ⁽¹⁾	2000 x 2700 (5,4 m ²)	2000 x 2800 (5,6 m ²)	6000 x 4000 (16 m ²)
Bottom bar	50 x 30 45 x 25	46 x 30 Fully retractable bottom bar	46 x 30 Fully retractable bottom bar ⁽²⁾

COMFORT

Ease of use	Electric	Electric	Electric
Thermal comfort	Sun protection E level reduction	Sun protection E level reduction	Sun protection E level reduction
Additional acoustical comfort	-	-	-

DURABILITY

Product guarantee	5 years		
Guarantee of Fixscreen® technology Zipper remains in the side guiding channel and is perfectly attached to the fabric	7 years (5 years for freestanding Fixscreen)		
Guarantee automation	5 years		
Guarantee on coating	10 years for all coating of aluminium parts		
Guarantee on gloss coating	5 years		
Fabric guarantee	5 years Exception: crystal window 2 years		
Wind guarantee	Up to 130 km/h		
Wind class EN13561:2004+A1:2008	WK3	WK3	WK3
Smooth technology	Yes	Yes	Yes

EASY TO INSTALL

Connect&Go®	Yes	Yes	Yes
Click&Safe®	No	No	No

⁽¹⁾ Restriction in screen size in combination with black-out fabric (when used outside)

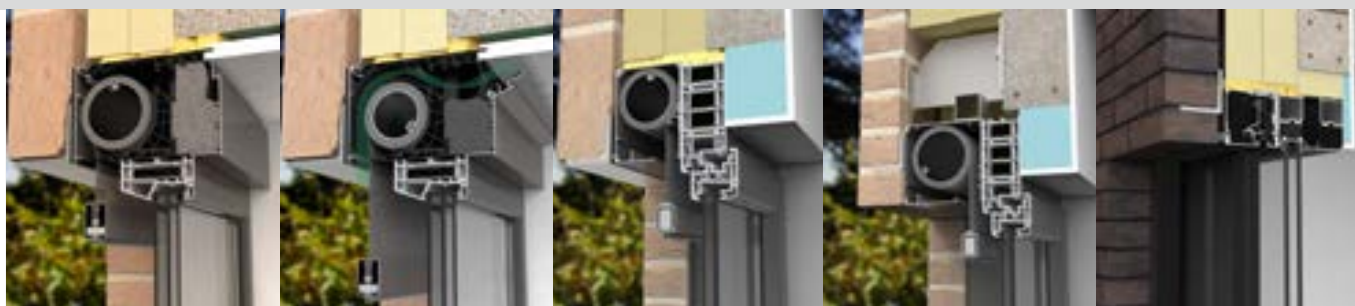
⁽²⁾ Bottom bar disappears in the box up to a height of 2800 mm

Fixscreen® Mono AK^{EVO}Fixvent® Mono AK^{EVO}

Panovista®

Panovista® Max

Slidefix®



N/A	N/A	150 x 110	N/A	N/A
132 x (167-287)	132 x (167-287)		150 x 155	150 x 110
4000 x 3500 (14 m²)	4000 x 3000 (12 m²)	4000 x 4000 x 2800 (22,4 m²)	6000 x 6000 x 3400 (30 m²)	4000 x 3000
2000 x 2700 (5,4 m²)	2000 x 2700 (5,4 m²)	N/A	N/A	N/A
30 x 50 Hidden seam	30 x 50 Hidden seam	46 x 30 Fully retractable	46 x 30 Partially retractable	48 x 32 Fully retractable
Electric	Electric	Electric	Electric	Electric
Sun protection E level reduction	Sun protection + ventilation E level reduction	Sun protection E level reduction	Sun protection E level reduction	Sun protection E level reduction
Strong	Strong	-	-	-
5 years			5 years (with maintenance contract)	5 years
7 years		5 years		
5 years				
10 years for coating of aluminium parts				
5 years				
5 years				
Up to 130 km/h	Up to 130 km/h	Up to 37 km/h	Up to 90 km/h	Up to 90 km/h
WK3	WK3	N/A	N/A	WK3
Yes	Yes	Yes	Yes	Yes
Yes	Yes	Yes	Yes	Yes
Yes	Yes	No	No	No

HORIZONTAL SUN SCREENS

	Topfix®	Topfix® Max
		
(in mm)		
TYPE OF ASSEMBLY (BOX MEASUREMENTS HxD)		
Surface-mounted	105 x 100	260 x 202
Recessed	N/A	N/A
DESIGN		
Surface screen (WxH)	4000 x 3000 (12 m²)	5000 x 6000 (30 m²)
Surface screen (WxH)black-out ⁽¹⁾		
Bottom bar	60 x 40 90 x 50	140 x 67
COMFORT		
Ease of use	Electric	Electric
Thermal comfort	Sun protection E level reduction	Sun protection E level reduction
DURABILITY		
Product guarantee	5 years	
Guarantee of Fixscreen® technology Zipper remains in the side guiding channel and is perfectly attached to the fabric	7 years	5 years
Guarantee automation	5 years	
Guarantee on coating	10 years for coating of aluminium parts	
Guarantee on gloss coating	5 years	
Fabric guarantee	5 years	
Wind guarantee	Up to 120 km/h ⁽²⁾	Up to 120 km/h
Wind class EN13561:2004+A1:2008	WK3	WK3
Smooth technology	Yes	Yes
EASY TO INSTALL		
Connect&Go®	No	No
Click&Safe®	No	No

⁽¹⁾ Restriction in screen size in combination with black-out fabric (when used outside)

⁽²⁾ Wind resistance depends on the W x H combination and height mounting feet (such as guarantee certificate)





FIXSCREEN®

The range of screens for vertical windows

As a pioneer in sun protection, Renson developed a complete range of Fixscreens that can be used with vertical windows where different installations are possible.

	Existing windows	New windows
Surface-mounted	✓✓	✓
Recessed	x	✓✓

Thanks to the Fixscreen technology, the sun protection fabric is in every position windproof and flapping and ripped fabrics are a thing of the past. The aluminum side supporting end pieces provide even greater stability and provide an aesthetic added value as they can be coated together with the profiles.



Can also be placed **freestanding**, this means that there is no window placed behind or in front of the screen. An example is the integration in a patio covering or balcony.

Fixscreen® Mono AK^{EVO}

Fixvent® Mono AK^{EVO}



FIXSCREEN® MONO AK^{EVO}

FIXVENT® MONO AK^{EVO}

Fixscreen® Mono AK^{EVO} (sun screen and acoustic)

Thanks to the integrated acoustic mousse, the Fixscreen Mono AK^{EVO} is ideal for **noise-affected facades**. As regards of dimensions, it is perfect to combine with the Fixscreen Mono AK^{EVO}.



Fixvent® Mono AK^{EVO} (sun protection, acoustic and ventilation)

The Fixvent Mono AK^{EVO} provides, in addition to sun protection, also **ventilation** with the windows closed and is draught-free thanks to a self-regulating valve that reacts to pressure differences. With integration of a blackout cloth, this is also the ideal solution for bedrooms





Panovista® Max

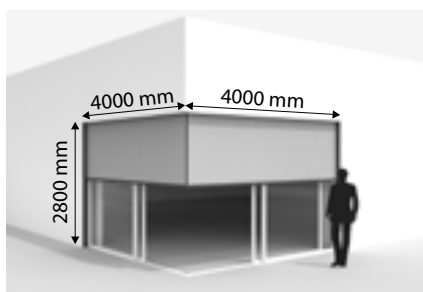
PANOVISTA®

A new range of screens for glass-on-glass corner windows

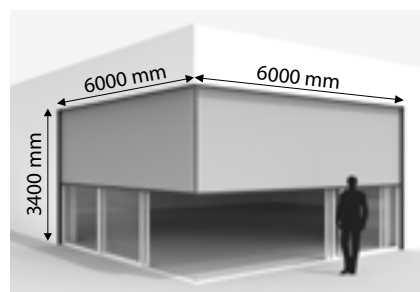
'Invisible architecture' is a new trend highly compatible with the trend towards minimalism. The Panovista is Renson's perfect response to this development. This new development is perfect for applications with glass-on-glass corner windows when there are no satisfactory solutions with conventional screens. Further, the Panovista can be integrated almost invisibly into the architecture of the building. There is no aluminium side guiding channel or guide system with cables in the corner.

2 types of boxes:

- Panovista: maximum width of 4000 mm on each side and maximum height of 2800 mm with a maximum total surface area of 22,4 m².
- Panovista Max: maximum width of 6000 mm on each side and maximum height of 3400 mm with a maximum total surface area of 30 m².



Max. surface : 22,4 m²



Max. surface : 30 m²



Panovista® (without middle zipper)



Panovista® Max (with middle zipper)



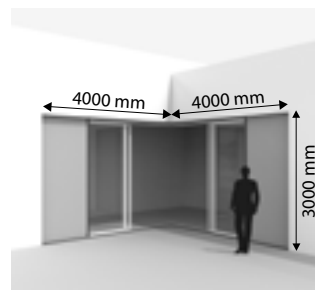
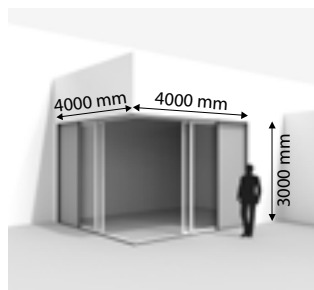
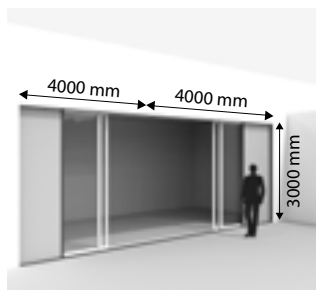
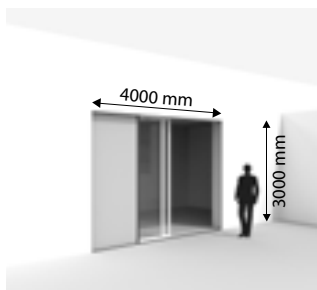
SLIDEFIX®

The first sideways sliding screen

Renson's Slidefix is another response to the 'Invisible architecture' trend. This new development with a sideways opening screen is the ideal windproof solution for large openings, sliding windows and corner solutions. A logical movement that enhances convenience and flexibility in terms of the room's use and need for sun protection. So there's an easy passage, even with sun protection. The Slidefix is also easy to maintain (removal of leaves, dust, etc.), has perfect water drainage and ensures invisible integration into the building envelope.

Different configurations are possible

- Single system
- Double system
- Corner solution: both inner and outer corner





Topfix® Max

TOPFIX®

The range of screens for horizontal windows

These horizontal sun protection screens ensure optimal control of incoming sun rays for all horizontal or slanting glazing (verandas, skylights, ...).

Topfix®

Topfix is a motor-operated horizontal sun protection screen fitted with a revolutionary tensioning technique in combination with the renowned Fixscreen-technology. This makes it possible to obtain unmatched fabric tension where no traditional fabric support rollers are required. Notwithstanding the compact box, the Topfix can cover surfaces up to 12 m². The box can be installed on top, at the bottom or sideways.



Box at the top



Box sideways



*Box at the bottom
(inside application)*

Topfix® Max

Topfix Max allows for rolling the fabric from the top downwards but just as well from the bottom upwards, in function of the required aesthetics. Black-out is also realizable with inside and outside applications. For the Topfix Max, widths of up to 5 m and extra large surfaces up to 30 m² are possible.



Box at the top



Box at the bottom

Durable side guiding channel

Durable innerrail with Smooth technology

Symmetrical zipper guarantees high wind resistance

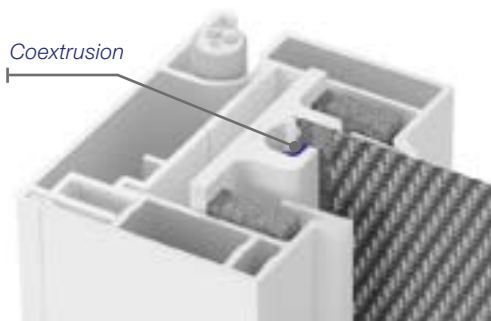


THE FIXSCREEN® TECHNOLOGY

Thanks to the Fixscreen technology (intelligent wind-resistant innerrail), the sun screens are windproof in any position. So, flapping and ripped screens are a thing of the past.

The side guiding channel including zip system

The side guiding channel and the coupling side guiding channel consist of extruded aluminium. No screws are visible on the front. The intelligent windproof innerrail is, thanks to coextrusion, provided with a patented wear-resistant layer, Smooth technology. This guarantees an extremely smooth, windproof operation.



Wind-resistant up to 130 km/h

Tests performed under observation of an independent test laboratory showed that the Fixscreen is resistant against wind speeds up to 130 km/h when closed. This corresponds with a hurricane of 12 Beaufort. This proves that the Fixscreen is the most wind-resistant sun screen.

Wind tunnel test:



Non wind-proof sun
protection at 30 km/h



Fixscreen at 130 km/h



Bottom bar

STYLISH FINISH WITH AN EYE FOR DESIGN

The box

The box profile is made of extruded aluminium profiles with sleek minimal lines and exists in 2 different forms: Square design and Softline design.



Square design



Softline design

The bottom bar

The aluminium bottom bar is weighted with galvanised steel to achieve optimum performance and fabric tension. For perfect sealing, the bottom bar is fitted with a PVC strip sealing strip.

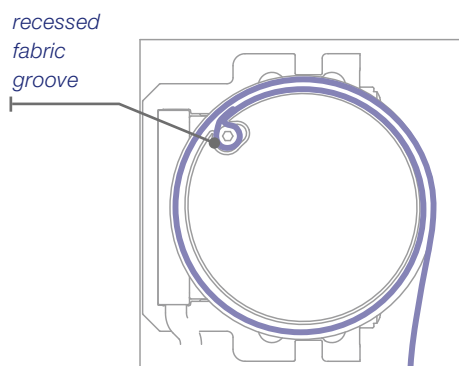




Fixscreen®

The fabric roller

This fabric roller is equipped with a unique patented recessed fabric groove to limit compression of the fabric strap on the screen.



Connect&Go®

The unique *Connect&Go* ensures an easy electric connection of the motor, this is also faster and easier to replace the fabric or the motor.



SAFETY AND TIGHT SCREENS

Detecto

In case of obstacles, a Detecto-motor will recognize these and stop. This prevents unpleasant and unforeseen circumstances. Moreover, the detection system always distinguishes between an obstacle and gust of wind. Thanks to a motor with obstacle detection, the end points are also automatically set, which speeds up installation. The fabric tension will therefore also be continuously adjusted so that the fabric is always tightly tensioned.







Fixscreen®

CONTROLLING YOUR SUN SCREEN

Simple and convenient operation

You have multiple options to choose from for controlling your sun screens. You can opt for a simple control switch or you can have the sun screen operate automatically when it becomes too sunny or windy.

You can also control the Fixscreen using a smartphone, tablet, PC, or even fully automate its operation according to preprogrammed times using the Somfy Tahoma interface. So, you can harmonise the operation of the sun protection entirely with your living needs.

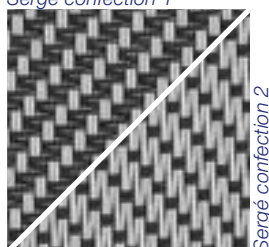




FABRICS

Sun protection fabrics are technical textiles that keep out excessive heat and bright light from the sun. An outside sun screen reduces the effects of overheating. Heat from sunlight is blocked before it reaches the glass. In addition to this practical aspect, the fabric also fulfils a decorative role. Colour will also influence heat transmission, light filtering, protection against UV radiation and the colour of light.

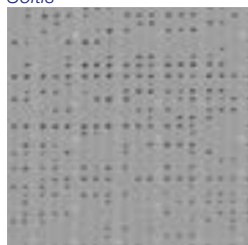
Sergé confection 1



Fibre glass fabric

This screen fabric is woven from glass fibre threads with a PVC coating. A glass fibre fabric is rigid, impervious to moisture and heat, rot proof and colour fast. The glass fibre fabric has two sides: 'confection 1' and 'confection 2'. Either side can be used as the visible part of the screen fabric. There are different types of glass fibre fabrics, including the Privacy Fabric.

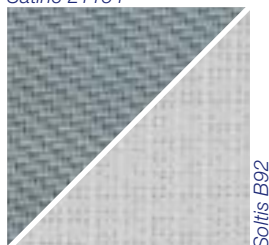
Soltis



Polyester fabric

This type of fabric is made of a finely-woven PVC coated mesh (fire classification M1) according to the pre-stressed method. The result is an extremely stable and non-deformable fabric with a long lifespan.

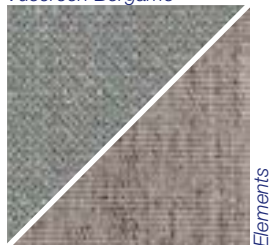
Satiné 21154



Black out fabric

Black out fibre glass fabric and polyester fabric looks like a standard fibre glass or polyester fabrics from the front. On the back, these screens have a black out PVC coating, which completely blocks out the light.

Vuscreen Bergamo



PVC free fabric

The fabric range is elaborated with PVC-free fabrics. Vuscreen Bergamo is a PVC free polyester fabric. In contradiction with other polyester fabrics, this fabric has a "woven" look. Element is a PVC free acrylic fabric that, apart from the sunscreen properties, also scores high with regard to privacy. You cannot look from the inside out or from the outside in, which contributes to a cosy, intimate atmosphere at home.

A SCREEN FABRIC CHOSEN BY YOU

At the level of sun screen, you have a choice between different types of fabric: from **translucent** to **blackout**, **fibre glass** or **polyester**. Every fabric has specific characteristics, colour options and uses.

A small selection from our glass fibre fabric collection is shown to the side of this page. The Renson Ambassadors will be happy to assist you in selecting your screen type and colour.

How do you choose a fabric?

Tip 1: A fabric in a dark colour provides the best view of the outside.

Tip 2: A lighter colour allows more daylight to enter and reduces the need for artificial light.

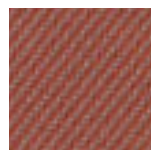
Tip 3: A complete blackout fabric is the best choice for your bedroom.

Customize through the Screen Selector

So you're convinced of the usefulness of outdoor sun protection? Justly. But then it would be a shame not to look for the most suitable type of screen with the right fabric. On which window should it come and in which direction should it be possible to open it? Of course important, but also: what else should the sun protection system meet? Do you insist on your privacy, do you also want to view the garden with the screens down, do you want complete blackout or does aesthetics play a major role? The Screen Selector guides you through all these selection criteria, with the result: screens, cut to your size.



Soon available

COLOUR RANGE FIBRE GLASS FABRICS (SERGÉ)

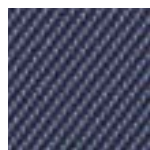
SC0109



SC0102



SC0101



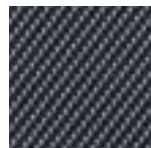
SC0140



SC2050



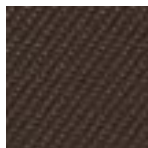
SC0110



SC0130



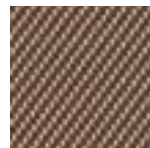
SC0202



SC0606



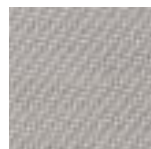
SC0207



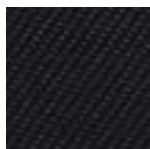
SC1006



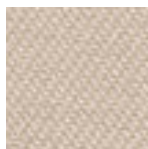
SCM17



SC0707



SC3030



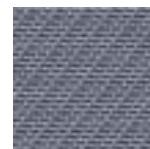
SC1002



SCM31



SCM01



SCM33



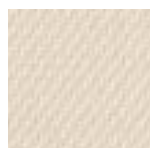
SC0816



SC2002



SCM36



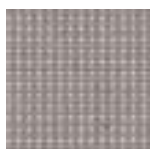
SC2020



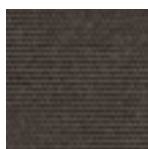
SCM45

COLOUR RANGE PVC FREE ACRYLIC FABRIC (ELEMENTS)

314 028



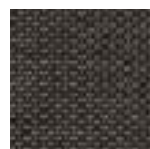
314 364



314 398



314 402



314 638



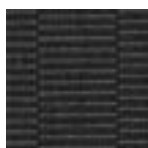
314 819



320 925



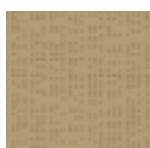
320 993



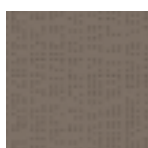
320 994

COLOUR RANGE POLYESTER FABRICS (SOLTIS® 92)

S92-2158



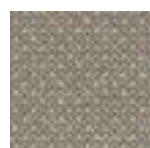
S92-2012



S92-50266



31707



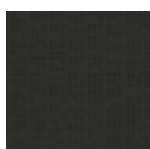
31717



31708



S92-2045



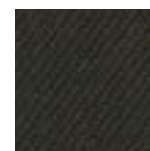
S92-2053



S92-50342



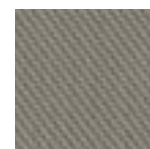
31718

COLOUR RANGE PVC FREE POLYESTER FABRIC (VUSCREEN BERGAMO)**ARCHITECTS' SELECTION**

SC1011



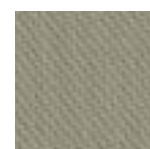
SC3333



SC3332



SC3301



SC3232



SC3231



SC3131

Subject to errors and technical changes. The colours printed here may deviate slightly, please consult our fabric sample range for the exact colour.

WHY CHOOSE ARCHITECTURAL SUN PROTECTION?

To achieve optimal sun protection, you can choose from a large range of fixed or movable aluminium systems.

Horizontal awnings above the window may be chosen. During the summer, these awnings offer good shadows without blocking the view to the outside, and allows the pleasant heat from the sun to enter during the winter months due to the low position of the sun.

If more flexibility is needed, the various types of **sliding panels** offer a solution. The sliding panels can be manipulated as needed to protect the area against direct sunlight, or to let the sunshine in.

The products are available in **all RAL colours**. Renson recommends structural paint to obtain an architectural, modern look. Furthermore, structural paint is more suitable for outdoor use and scratches are less-visible.



Sunclips®



Sunclips®

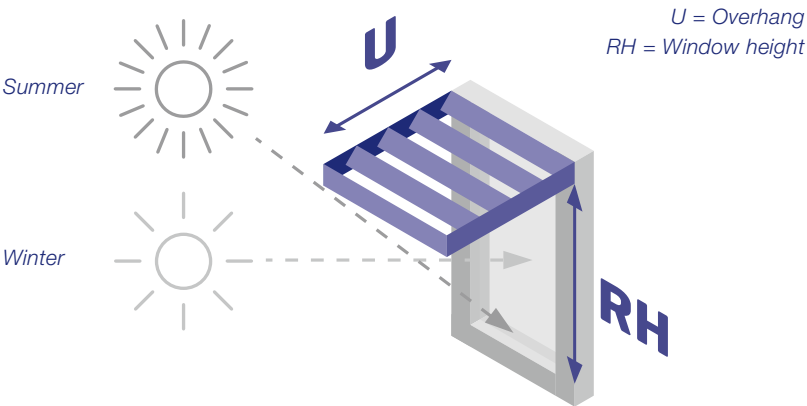
ARCHITECTURAL SUN PROTECTION

Architectural awings for above the windows

In particular, for windows on south facing façades, horizontal sun screens provide the ideal solution for managing the entry of solar heat without blocking the **view**. During summer, when the sun is high, these screens offer ideal protection against overheating. During winter, when the sun is low, these screens allow heat into the building. In addition, these sun screens are very **maintenance friendly**.

Recommended overhang for the brise soleil

To achieve optimal results with the brise soleil, it is important that the overhang is properly adjusted according to the situation. The orientation of the façade and the height of the window shade are crucial elements. The dimensions that Renson recommends in the attached table are calculated to ensure that the brise soleil will block 75% of the total incoming solar heat during the summer.



Orientation of the façade	E	SE	S	SW	W
Recommended overhang U	1.2 x RH	0.8 x RH	0.5 x RH	0.8 x RH	1.2 x RH

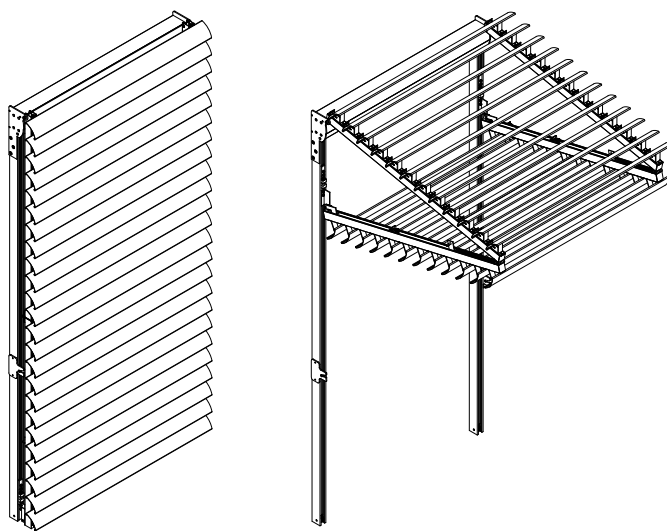
Program available for specific calculations.



CILIUM®

Motorised folding shutters with aluminium blades

This dynamic sun protection system can be transformed from a vertical sun protection in front of a window to a horizontal, open sun screens above a window.





Loggialu

Loggialu Plano

Loggiawood

*Loggialu Privacy
(rotating blades)*

*Loggiawood Privacy
(rotating blades)*

*Loggiascreen
Canvas*



LOGGIA®

You control the amount of light that comes in

The Loggia sliding panels combine the functionality of an efficient sun screen panel with the elegant look and aesthetic design within a high-quality and contemporary concept. With the vertical sun screen sliding panels, the home owner can even influence the way sunlight enters rooms (i.e. dynamic sun protection).

The Loggia panels are constructed from aluminium frames finished with screens, and aluminium or wooden blades. It is also possible to opt for movable aluminium or wood blades, which can be manually rotated from the closed position to the fully open position, or vice versa.

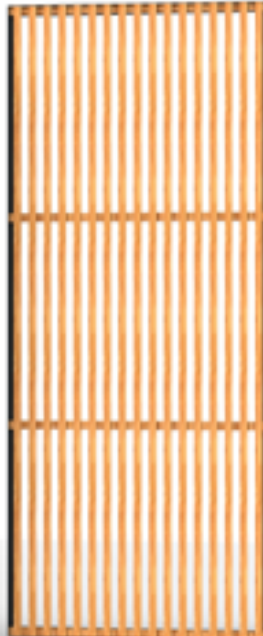
Loggialu Wooddesign



Loggialu Stirata



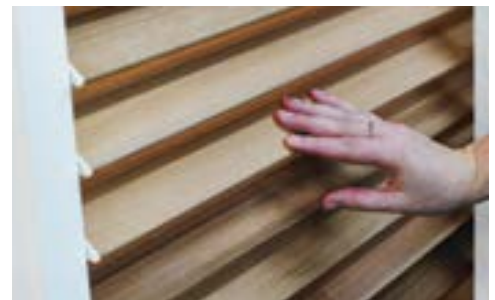
Loggiawood Linea



Specifically for Outdoor use

Privacy

Privacy with rotating wooden or aluminium blades

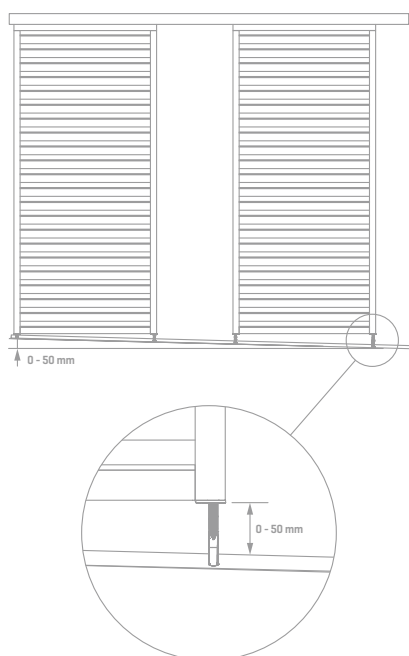




Flexguide®

FLEXGUIDE®

The Flexguide is a self-regulating underguide that uses spring tension to adjust itself to height differences with respect to inclines, construction tolerance, thermal dilatation, etc. It eliminates the need to place filling material under the under-guide profile to level out slopes (up to 50 mm). Flexguide springloaded pin must always remain in contact with the under-guide profile, on inclines or uneven surfaces, or if the dimensions change, for example, due to temporary loads or thermal dilatation.





CUSTOMISED ARCHITECTURAL SOLUTIONS

In addition to the standard sun screens and sliding panels, Renson also provides a wide range of custom-made solutions.

- Curved sun screen: sun-reflecting sun screen using curved blades for assembly in curved façades
- Sun screen with Icarus blades (lens-shaped blades)
- Fixed sun-reflecting walls
- Movable sun-reflecting surfaces with manually or electrically adjustable lens-shaped blades
- Sliding panels with extra large dimensions



Icarus®

RESEARCH AT RENSON®

SHADE AND STABILITY (WIND TUNNEL)

Sun screen dimensions

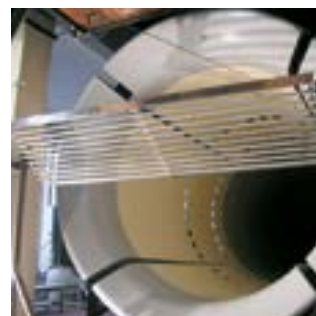
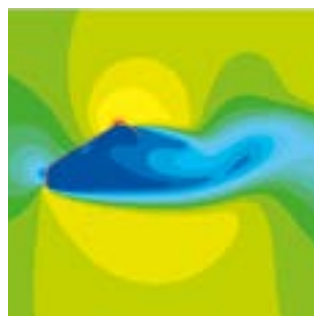
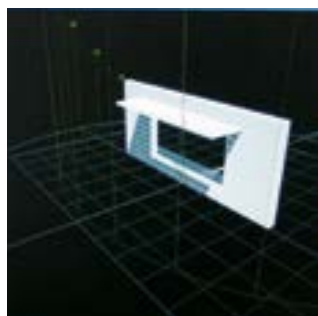
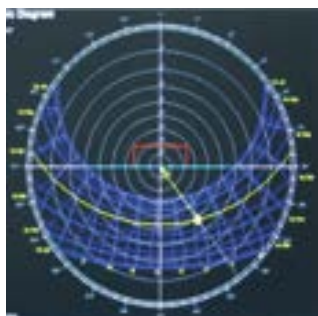
Renson sun screens are designed to efficiently reflect the solar heat during the summer months and, if desired, to allow the solar heat to enter during the winter months. When dimensioning your optimal sun screen, allowance is made for the changing position of the sun, the façade orientation, and the dimensions of the window to the protected. Your specific wishes are also taken into account regarding the management of natural light, the prevention of unpleasant reflections or risk of dazzle.

Development

Renson sun screens are designed using the latest CFD simulations technologies in collaboration with recognised research institutes, such as the WTCB, Von-Karman Institute, CST4, etc. Moreover, all products are tested with respect to stability and durability.

Stability and dimensioning

Conditions of use are drawn up for the different Renson products in conformance with the applicable Eurocodes, which are based on the product properties and the local wind and snow loads.





Camargue®

ENJOY YOUR GARDEN TO THE FULLEST

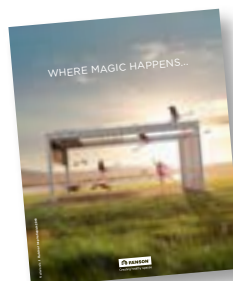
Regardless of the weather, we like to spend as much time outdoors as possible. The garden is no longer separate from the house; both form a single unit. This also makes us yearn for more atmosphere, comfort and optimal joie de vivre while being outdoors. Being outside becomes living outside!

If you want to live outside, you have to take the elements into account. If the sun gets too sultry, if the rain starts to pour, or if the wind begins to howl, we must flee indoors. Or do we? A terrace covering works wonders. Available in all colours to match the style of the home, free standing, on the home or on an existing (roof) structure.

These comfortable outdoor rooms are a guarantee of mood and appearance as well as warmth and cosiness. When it gets dark late in the evening, you simply switch on the integrated lighting. Even if it gets colder, you can still remain comfortable outside. One or more heating elements can be used depending on the size of the terrace covering. You can even play your favourite music on the terrace thanks to the integrated flat panel speakers.

Want more info?

Request our terrace covering brochure at:
www.renson-outdoor.eu





Invisivent® EVO

WHY VENTILATE?

Daily, the air in the house is contaminated by the inhabitants (breathing, ...), their activities (cooking, showering, cleaning, ...), the building products (paint, glue, all kinds of particles, ...) and the materials of your interior (volatile hazardous substances, ...).

All these sources of contamination contribute to a bad Indoor Air Quality. By always keeping everything closed, this contamination (moisture, CO₂ and all kinds of substances that could cause allergies) in the home, stays locked inside. It is thus **essential to correctly ventilate the home**.

Many people think that keeping the window open for a while will be sufficient. However, that is not the case.

The effect of this is only temporary, which means that a lot of heat is lost. **Continuous basic ventilation** ensures good air quality in the living areas.

Want more info?

Request our ventilation brochure at:
www.renson.eu





THE ULTIMATE MARRIAGE OF DESIGN AND QUALITY

You create your façade cladding according to your own taste. Horizontally or vertically, it fits right into the most diverse styles: from classic over modern to contemporary, letting you create a unique, stylish, elegant and contemporary look for your home or business.

Garage doors and house doors integrate smoothly into a single flush façade surface. Functional elements such as a letterbox, intercom or doorbell are seamlessly integrated. Thanks to the individual profiles, you can even finish curved façades and because of the high-quality finish, they are also suitable for indoor applications.

Of course, making them easy and flexible to mount was paramount. Invisible fasteners ensure a sleek design while at the same time allowing thermal expansion.

Renson stands for sustainability, and this aluminium façade cladding is no exception. It is not only durable, but also resistant to all weather conditions. Light and yet strong,... and above all: extremely easy to maintain.

Want more info?

Request our wall covering brochure at:
www.renson.eu



RENSON®: YOUR PARTNER IN VENTILATION, SUN PROTECTION AND OUTDOOR CONCEPTS

Renson®, with head office in Waregem (Belgium), is a European trendsetter when it comes to ventilation, sun protection and outdoor.

Creating healthy spaces

Based on experience gained since 1909, we develop energy-efficient total solutions to achieve a healthy and comfortable indoor and outdoor climate. Our remarkable head office, built in accordance with the 'Healthy Building Concept', is a perfect example of our corporate mission.

No speed limit on innovation

A multidisciplinary team of more than 90 R&D specialists is continually optimizing our existing products and developing innovative total concepts.

WHERE CAN I GO TO FOR RENSON® PRODUCTS AS END CUSTOMER?

In order to guarantee high-quality expertise and professional placement of the Renson® products, we have built up a network of well-trained Ambassadors.

RENSON® Premium Ambassadors

These are ambassadors who have years of experience in selling and installing Renson® products. They also keep our entire range and guarantee the most professional guidance.

RENSON® Ambassadors showcase our products in their showroom and ensure that the purchased product is placed professionally and properly with their own placement team. They also guarantee a professional after-sales service.

Also visit: www.renson.eu

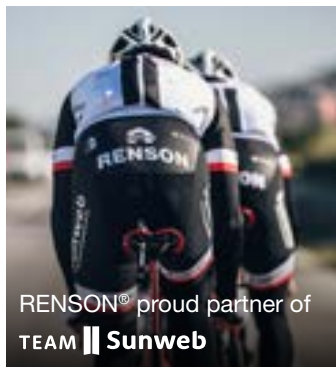


RENOVATION/ (RE) BUILDING PLANS? VISIT OUR SHOWROOM

EXIT 5 is open
Monday to Friday: 8h30 - 12h00 and 13h30 - 18h00
Saturday: 9h00 - 12h00

Make an appointment by phone on
056 62 96 87 or online via www.exit5.be

Maalbeekstraat 10 - 8790 Waregem - Belgium
www.exit5.be



RENSON® Headquarters
Maalbeekstraat 10, IZ 2 Vijverdam B-8790 Waregem
Tel. +32 (0)56 62 71 11
info@renson.eu
www.renson.eu



L2009907 03/18 Export EN

